

DESCRIPTION

HEDGE-4008-S130 is an integrated 8-Channel GNSS CRPA solution combining advanced antenna processing with a dual-band, multi-constellation GNSS engine.

Supporting L1 and L5 operation, the system leverages two independent CRPA arrays to provide high-performance spatial and spectral interference suppression.

Designed for SWaP constrained platforms, the solution enables high-end anti-jam capability in a compact form factor.

KEY FEATURES

- L1, L5 Band Support
- Dual-Frequency & Multi-Constellation GNSS Reception
- Up to 3 Different Jammer Suppression
- Adaptive Notch Filters & Pulse Blankers
- Real Time Monitoring and Configuration in WebGUI
- Virtual Antenna Pattern Visualization
- FFT Spectrum Viewer
- Jammer Signal Information
- Embedded GNSS Receiver

APPLICATION AREAS

- Commercial Drones & UAVs
- Marine
- Autonomous Vehicles / Robotics

TECHNICAL SPECIFICATIONS

- Antenna Array : 4 + 4 Element
- Simultaneous Independent Nulling: 3 + 3
- Nominal Jammer Suppression: > 40 dB
- J/S Performance: > 100 dB
- Frequency Bands: L1C, L1C/A, E1, B1C
L5, E5a, B2a
- Operating Voltage: 9-36 V DC
- Power Consumption: < 13W

INTERFACE SPECIFICATIONS

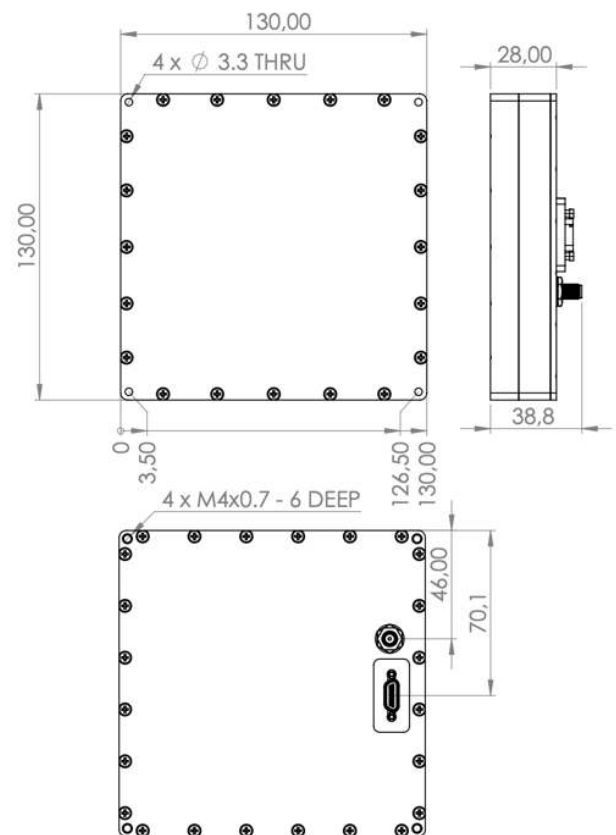
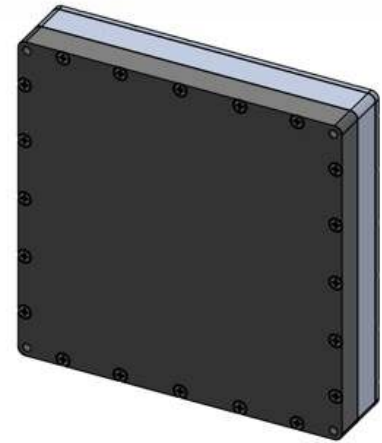
- Interfaces: Ethernet, RS-485, RS-232
- Connectors: 1x SMA, 1x Micro-D

MECHANICAL SPECIFICATIONS

- Dimensions: 130x130x28 mm
- Weight: < 540g

ENVIRONMENTAL SPECIFICATIONS

- Operating Temperature: -40°C to +85°C
- Environmental Compliance: MIL-STD-810H
- EMC Compliance: MIL-STD-461F



Unless otherwise specified dimensions are in millimeters.