



Anti-drone Solutions Expert



Make the Sky Safer

Tel: 010 6292 9313

Email: business@lizhengtech.com

Official website: <https://lztech.tech/>



Product Portfolio



Images are for illustrative purposes only. Actual appearance may vary by model and application.

Product Portfolio

Passive Detection System



Precise Jamming System



Detection and Spoofing System



Detection and Defense System



Active Electro-optical Detection System



Images are for illustrative purposes only. Actual appearance may vary by model and application.

H3 Pro

Portable Drone Locator for Rapid Deployment



Key Advantages

Compact and portable, it enables operators to detect, identify, and locate drone signals in real time. Ideal for mobile operations, it delivers reliable situational awareness for patrol, perimeter security, and tactical response.

Key Specifications

Detection Bands	800/900MHz, 1.2GHz, 2.4GHz, 5.2GHz, 5.8GHz, Wi-Fi
Detection Distance	0~3km
Position Accuracy	≤ 3m (RMS)
Detection Capacity	≥ 15 drones (simultaneous)
Response Time	≤ 5s
Battery Capacity	12000mAh
Continuous Runtime	≥ 4 hours
Screen Size	6.0 inch
Operating Temperature	-25°C~+65°C

D5-B

TDOA + Drone Detection and Positioning System



Key Advantages

A fixed-site, network-enabled UAV detection and positioning system based on multi-sensor fusion and passive RF sensing, supporting AOA and TDOA integration and networking.

Key Features

- Passive Detection
- Superior Computing Capability
- Scalable Detection Frequency Range
- Blind Spot Coverage

Key Specifications

Detection Bands	30MHz~6GHz, 6GHz~8GHz customizable
Detection Distance	0~5km
Detection Coverage	360° full airspace
Operation Mode	Stationary Deployment, Single Station, or Multi-station networking

DF Max Series

Full-band Drone Detection and Direction Finding System




DF5 Max

DF10 Max

Key Advantages

DF Max Series is a fully integrated drone detection, direction finding, and identification system designed for complex electromagnetic environments. It supports full-band direction finding, and multi-target tracking and detection up to 8km.

Key Features

-  No Electromagnetic Interference
-  Full-band Direction Finding
-  Compact Integrated System
-  Commercial off-the-shelf Drones

Key Specifications

Detection Bands	100MHz~8GHz
Detection Distance	0~8km
Direction Finding Bands	100MHz~6GHz
Direction Finding Distance	0~5km
Direction Finding Accuracy	≤5° (RMS)

*DF10 MAX Features

DF Series

Multi-band Drone Detection and Direction Finding All-in-one System



Key Advantages

DF series combines passive detection, precise direction finding, and network-based positioning into a single integrated system, delivering covert, accurate, and scalable drone monitoring capabilities. With full-band coverage and advanced identification technology, it ensures reliable detection and classification of a wide range of drones, making it highly suitable for critical infrastructure and high-security scenarios.

Key Specifications

Detection Bands	30MHz~6GHz
Detection Distance	0~8km
Detection Coverage	360° full airspace
Direction Finding Bands	2.4GHz, 5.8GHz
Direction Finding Accuracy	3° (hovering), 10° (moving)
Power Supply	AC 110~240V

S Series

Multi-band Points Navigation Spoofing System



Key Advantages

A high-performance GNSS spoofing system supports multiple global navigation satellite systems (GPS, GLONASS, BDS, and Galileo). It precisely misguides or redirects unauthorized drones. With full-airspace protection, and 24/7 operation capability, the system delivers reliable GNSS-based mitigation in complex environments.

Key Features



All Frequency Coverage



360° Omnidirectional Spoofing



High Accuracy



Low Interference on the Environment Around

Key Specifications

Spoofing Signal	Covering all navigation frequencies of GPS, Beidou, Galileo, and GLONASS
Spoofing Distance	0 ~ 1km
Spoofing Range	360°

HD5

Portable Drone Detection System



Key Advantages

This detection portable system features a 13.3-inch touchscreen for intuitive command and real-time situational awareness. Its replaceable battery design ensures continuous operation and the whole system also supports modular extension.

Key Specifications

Detection Bands	100MHz~6GHz
Detection Distance	0~5km (Depend on environment and drone types)
Protocol Cracking	CRPC, Drone ID, Remote ID
Detection Quantity	>20 Drones (Simultaneous)
Power Supply	Built-in lithium battery or AC110~240V
Continuous Runtime	6h~7h
Dimensions	470mmx357mmx176mm (Closed State)



D5 - Air

Airborne Drone Detection System

Key Advantages

A UAV-mounted RF detection unit that extends surveillance into the air, enabling widearea coverage, precise localization, and real-time intelligence in complex environments.

Key Features



Multiple Drones Compatibility



Air-Ground Coordination



Blind Spot Elimination



Persistent Aerial Surveillance

Key Specifications

Detection Bands	400MHz~6GHz
Detection Distance	0~5km
Detection Range	Horizontal 360°, Vertical -90°~-15°
Carried Drone Type	DJI M400, M350, etc. (UAV platform not included; configurable upon request.)



VM

Vehicle-Mounted Drone Detection & Jamming System

Key Advantages

This VM system provides mobile, real-time detection and jamming, creating a “moving protection bubble” while on the move. It delivers strong broadband suppression against commercial and DIY drones. Designed for harsh environments, it features IP66 protection and operates reliably from -40°C to +60°C.

Key Specifications

Detection Bands	30MHz~6GHz
Detection Distance	0~3km
Direction Finding Accuracy	(RMS) 3°(hovering); 10°(moving)
Jamming Bands (Customizable)	400MHz, 800MHz, 900MHz, 1.2GHz 1.4GHz, 2.4GHz, 5.2GHz, 5.8GHz
Jamming Distance	0~2km
Jamming Mode	Omidirectional
Dynamic Detection	0~80km/h (Vehicle speed)

HDJ 3.0

Upgraded Handheld Drone Detection and Jamming Device



Key Advantages

This upgraded device integrates detection and early warning, direction finding and positioning, jamming functions. It adopts dual GPS antenna direction-finding technology, 5.5-inch touchscreen, the dual-battery power supply design, ensuring stable product operation.

Key Specifications

Detection Bands	400MHz~6GHz
Detection Distance	0~3km
Direction Finding Accuracy	≤10° (RMS)
Jamming Bands	433MHz-5.8GHz (Customizable)
Jamming Distance	0~2km
Jamming Mode	Omidirectional
Power Supply	Two hot-swappable batteries (AC 110~240V, 50 /60Hz)
Continuous Runtime	≥3h (Support battery replacement without shutting down) ≤1h (Single or Multiple Band Jamming)

DFJ53 Max

360° Airspace Defense System



Key Advantages

Uniting a six-sided high-gain shields array with adaptive beamforming, the system extends precise jamming capabilities, with a zero-blind-spot defensive perimeter. Integrated with other detection products, it delivers 24/7 autonomous suppression against diverse threats—from mainstream UAVs to elusive FPVs and custom DIY models.

Key Features

-  Full-band Detection and Direction Finding
-  360° Directional High-Power Jamming
-  Integrated "Detection and mitigation" Loop
-  Low-Visible & Modular Deployment

Key Specifications

Detection Bands	400MHz~6GHz
Detection Distance	0~5km
Jamming Type	Image Transmission, Data Transmission, etc. (Communication Link), GNSS Navigation Link
Jamming Distance	0~3km

DFJ Series

Stationary Drone Detection and Jamming All-in-one System



Key Advantages

DFJ series is an integrated detect-and-Jamming system and it can automatically detect, track, and neutralize drone threats, enabling fast response with reduced operator workload, supporting flexible configuration and networked deployment.

Key Specifications

Detection Bands	30MHz ~ 6GHz
Detection Distance	0~8km (DFJ83)
Jamming Bands	900MHz, 1.5GHz, 2.4GHz, 5.2GHz, 5.8GHz (customizable)
Jamming Distance	0~3km
Direction Finding Accuracy	3° (hovering), 10° (moving)
Operating Mode	7×24 autonomous operation
Optional Function	Navigation spoofing

Ruyi

Stationary Drone Precise Control System



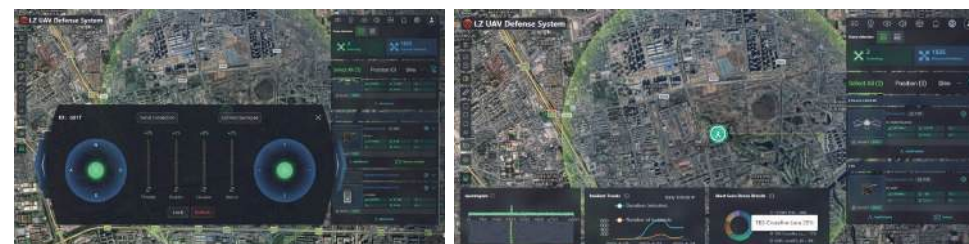
Key Advantages

Ruyi, developed by LZ TECH, utilizes cutting-edge CRPC® 3.0 (Cognitive Radio Protocol Cracking) technology to reconstruct control-layer data streams, allowing precise drone control. In an era where drones are increasingly integrated into critical operations, security and control have become more important than ever. Our system is designed to demonstrate a new level of intelligent intervention, allowing authorized users to detect, intercept, and safely assume control of rogue or unidentified drones in real-time.

Key Features

- One Click to Take Over the Control Rights
- Reliable Defense Measures without Collateral Damage
- Operator-Friendly Software Interface
- Selective & Targeted Intervention

Real-time Monitor on CCS System





T100

Tracking and Pointing PTZ Camera System



Key Advantages

T100 enables precise visual identification and continuous tracking of targets by fusing radar and RF with dual-spectrum imaging. With integrated edge AI and automated tracking, it ensures accurate target confirmation and provides reliable guidance for jamming devices, forming a critical link between detection and intervention.

Key Specifications

Operation Mode	Combine with radar, RF detection system
Identification Distance	Daylight $\geq 2\text{km}$, Night $\geq 1\text{km}$ (Target: DJI Mavic3)
Tracking Distance	Daylight $\geq 3\text{km}$, Night $\geq 2\text{km}$ (Target: DJI Mavic3)
Camera Focal Length	6.1mm ~ 561mm
Resolution	2688 \times 1520 (Optical)
Infrared Thermal	VOx Uncooled Infrared Detector
Identifying Target	Support differentiating drones and birds



TR100

Radar Detection and EO/IR Tracking All-in-one System



Key Advantages

TR100 is an integrated drone detection and tracking system that combines a visible-light camera, an infrared thermal imaging camera, a wide-angle camera, and a phased-array radar. Guided by radar detection, the EO/IR equipment can effectively track, identify, and issue early warnings for small and medium-sized drones. It can be integrated with RF detection and jamming equipment to form a comprehensive multi-source drone defense system, providing all-weather, round-the-clock integrated ground-to-air security protection for critical facilities.

Key Specifications

Operation Mode	Independent operation, combined with RF system
Radar Detection Distance	$\geq 2\text{km}$ (Target: DJI Mavic 4, RCS=0.02m ²)
Radar Detection Range	Azimuth $\geq 90^\circ$, Elevation $\geq 90^\circ$
Radar Detection Accuracy	$\leq 2\text{m}$
EO/IR Identification Distance	Daylight $\geq 2\text{km}$, Night $\geq 1\text{km}$ (Target: DJI Mavic3)
EO/IR Tracking Distance	Daylight $\geq 3\text{km}$, Night $\geq 2\text{km}$ (Target: DJI Mavic3)
Camera Focal Length	6.1mm ~ 561mm



VAR300

Active Electro-optical Detection System

Key Advantages

A fixed EO/IR surveillance system designed for low-altitude drone detection and tracking, it integrates visible and thermal imaging with AI-based recognition to ensure reliable day-and-night target identification. The system supports automatic tracking and trajectory recording, providing clear evidence for analysis and response.

Key Specifications

Detection Distance (Target: DJI Mavic3)	Daylight: Detection ≥1km, Tracking >1.5km Night: Detection ≥0.5km, Tracking ≥0.8km
Working Hours	24-hour continuous operation
Resolution	1920 x1080(Optical)
Infrared Thermal Imaging	Detection Type: VOx uncooled focal plane arrays Resolution: 640x512dpi
Detection Mode	Active scanning, searching, identifying, and tracking (without the guidance of other devices)
Detection Function	It detects and shows the captured images of the drone, target similarity, direction, and other information



Drone Detection and Identification Module Family



Key Advantages

The Module consists of a radio frequency (RF) unit and a computing unit. Utilizing state-of-the-art CRPC® technology, it can detect and identify market drone models (e.g., DJI and AUTEL) and DIY drones. Its compact size and seamless integration make it a highly versatile solution that can be easily deployed within clients' own system. All necessary accessories will be provided to ensure a complete solution.

Key Features

- 70MHz-6GHz Full Band Detection
- Accurate Identification and Multi-dimensional Information
- High Speed Computing Capability
- Built-in Software, API Interface
- Seamless System Integration
- Extensive Drone Models Library Covering Market and DIY Models

Matching RF accessories



CCS and CRPCS



Unified Command Interface



Dynamic Target Tracking



Smart Alarm & Response



Mission Replay & Data Logging



Cloud + Local Deployment



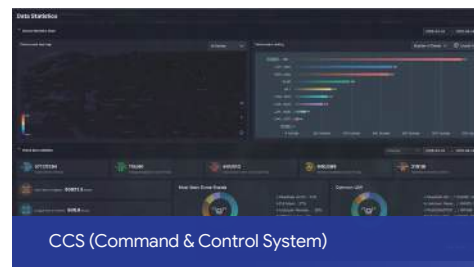
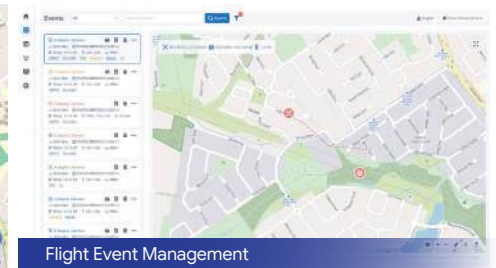
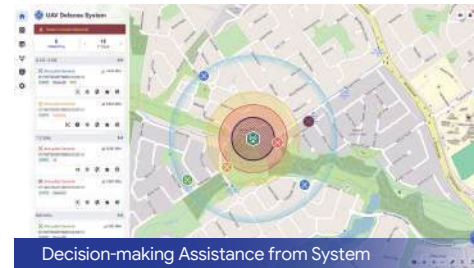
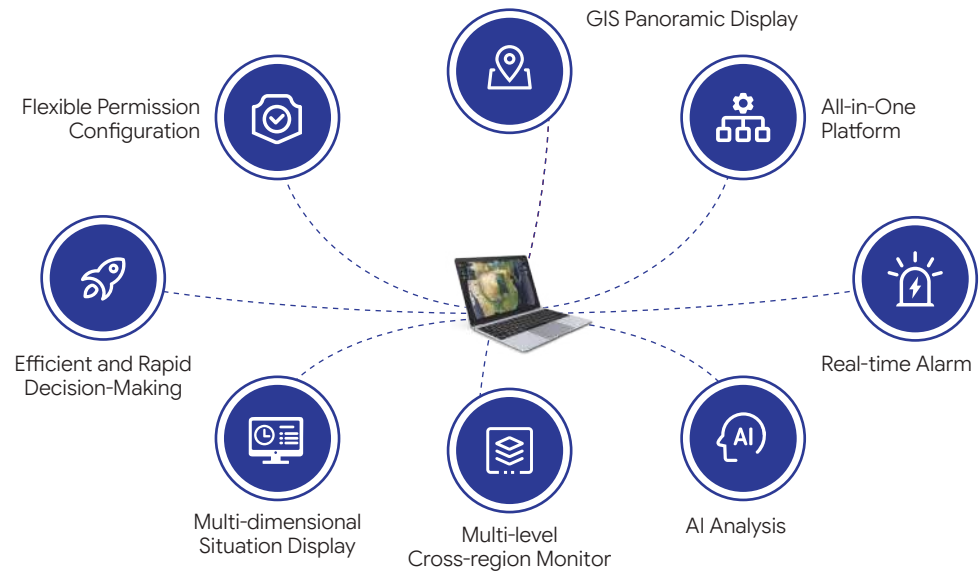
Integrated Device Management



LZ TECH delivers a comprehensive software ecosystem designed to support intelligent drone defense operations and low-altitude security management.

Our software portfolio includes the Command & Control System (CCS) and CRPCS (Web UI), enabling centralized management, protocol level analysis, and real-time situational awareness across distributed deployments.

Together, these platforms provide unified monitoring, device coordination, data visualization, and operational control, allowing users to efficiently manage complex low-altitude security scenarios through intuitive, secure, and scalable digital interfaces.



Multi-tech Fusion Drone Detection Solution



Integrated Solution



Key Advantages

The Multi-Technology Fusion Drone Detection System combines radar, EO/IR, and RF systems to provide real-time detection and identification of low-altitude targets.

Key Features



Data Fusion Software API Interface



Active EO/IR Searching and Tracking



Flexible and Multiple Deployment Methods



Seamless Integration with Jamming System



Up to 10km RF Detection Range



Networking and Data Sharing

Real-time Monitor on CCS System



Multi-source Data Information Presentation



Multi-device Operation Status in Coordination



Multi-layer Information about Target Drones



Modular Solution

Multi-tech Fusion Drone Interception Defense System

The system is an integrated anti-drone defense system that combines radar and EO/IR detection, C2 system, and FPV interceptor. Through multi-sensor fusion, it detects, tracks, and performs interception of low-altitude targets. It features multi-platform deployment capabilities, high cost-effectiveness, and strong environmental adaptability, making it suitable for scenarios such as public security and special operations.



Key Features



High detection reliability



All-environment capability

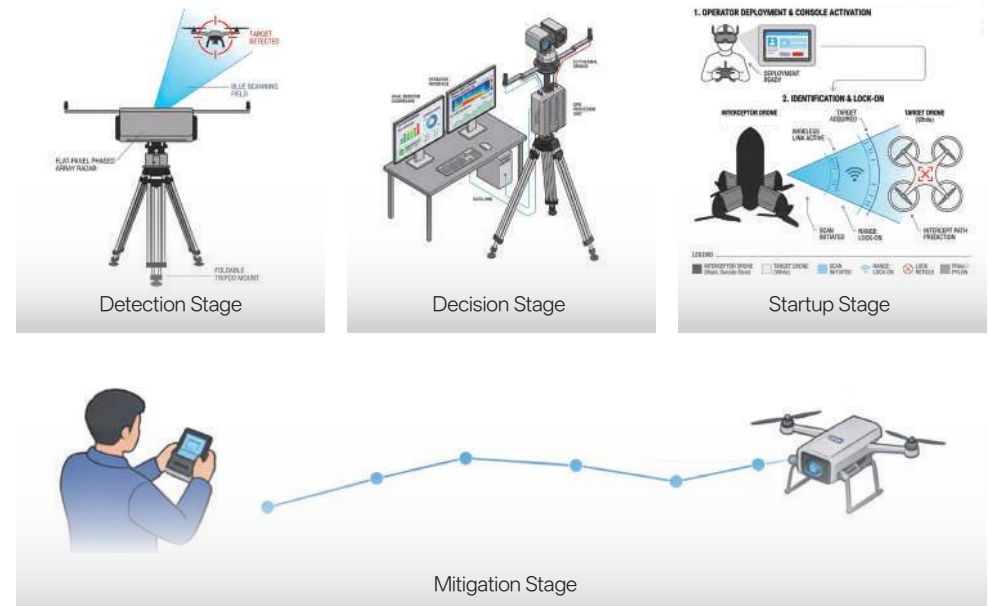


Accurate target identification



Early warning + long-range coverage

System Workflow



Real-time Monitor on CCS System



Multi-source Data Information Presentation



Multi-source Information to Identify Target Drone