

# LISA 3D



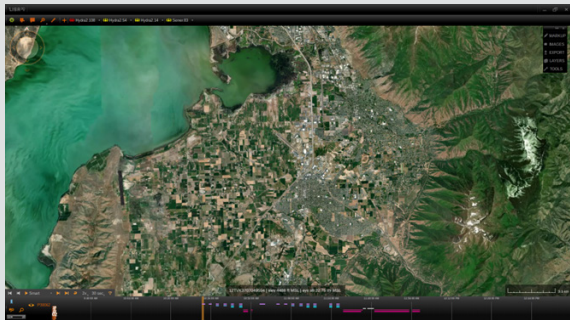
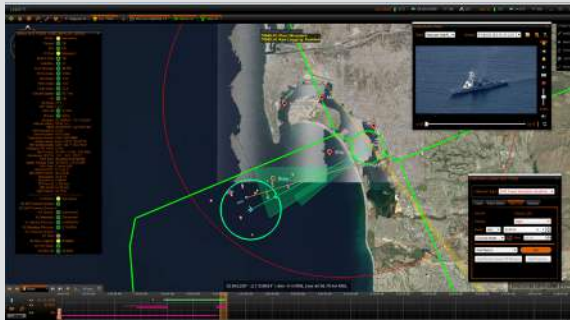
## **FULLY INTEGRATED C2 & PED SOFTWARE**

Transform real-time data from multiple sensors into actionable intelligence and quickly make informed decisions



# LISA 3D

Can be combined for multi-user configurations.



## KEY FEATURES

|                        |  |
|------------------------|--|
| IMPORT FILE TYPES      | SHAPEFILE, GEOTIFF, NITF, JPEG, KML/KMZ, GPX, AIS, NETWORK VIDEO STREAMS                             |
| EXPORT FILE TYPES      | SHAPEFILE, GEOTIFF, NITF, JPEG, KML/KMZ, PNG, TIF, BMP, PPT, CLIPBOARD                               |
| COMMUNICATION          | INTEGRATED COMM LINK, CHAT, SENSOR HEALTH MESSAGES   |
| VISUAL FLIGHT PLANNING | COMMAND & CONTROL, UAV WAYPOINT GENERATION, VISUAL GUIDANCE  |
| IMAGE EXPLOITATION     | REAL-TIME PRECISION IMAGES FORMATION LIBRARIES SAR, CCD, MTI, MARITIME SURVEILLANCE, QUAD-POL, EO/IR |
| SEARCH FEATURES        | TIMELINE, CALENDAR, BASIC & ADVANCED SEARCH BY: TIME, DATE, SENSOR, LOCATION, & DATA TYPE            |
| SYSTEM REQUIREMENTS    | WINDOWS  |
| TRL                    | 9  |

## OPERATIONS

|          |   |
|----------|---|
| HARDWARE | NANOSAR®, LISA GS™, VIPER™ COMM LINK, FALCON™ EO, EO/IR, WEATHER STATION, AIS, FMV, CUSTOM CONFIGURATIONS |
| SOFTWARE | LISA IMAGER™, LISA MOTION™, LISA CHANGE™, LISA TRACKER™   |

## CAPABILITIES

|           |   |
|-----------|---|
| PLANNING  | <p>CREATE DATA COLLECTION PLANS FOR MULTIPLE MODES AND SENSORS</p> <p>GENERATE FLIGHT PLANS BASED ON DATA COLLECTION PLANS</p> <p>INTEGRATE MULTIPLE FLIGHT TRACKS INTO SINGLE FLIGHT PLAN</p> <p>LOAD &amp; STORE MULTIPLE FLIGHT TRACKS FOR A SINGLE SENSOR</p>   |
| OPERATING | <p>MONITOR &amp; CONTROL MULTIPLE SENSORS, PLATFORMS, AND DATALINKS IN THE SAME WINDOW</p> <p>TRACK REAL-TIME LOCATION OF SENSORS</p> <p>MONITOR FLIGHT CHARACTERISTICS OF PLATFORMS (INCLUDING VELOCITY AND ALTITUDE)</p> <p>COMMAND SENSORS TO AUTOMATICALLY COLLECT DATA</p> <p>DYNAMICALLY CHANGE DATA COLLECTION MODES &amp; PLANS DURING MISSIONS</p> <p>CROSS CUE BETWEEN SENSORS</p> <p>SEND &amp; RECEIVE MESSAGES</p> |
| ANALYZING | <p>VIEW REAL-TIME DATA FROM MULTIPLE SENSORS IN A SINGLE DISPLAY</p> <p>VIEW, ANNOTATE, &amp; MARK SENSOR DATA PRODUCTS</p> <p>EXPORT DATA PRODUCTS</p> <p>STORE &amp; SEARCH PREVIOUSLY COLLECTED DATA PRODUCTS</p> <p>FILTER &amp; PLAYBACK DATA PRODUCTS</p>   |

## APPLICATIONS

- Specialized ISR Missions
- Wildland Fire Monitoring
- Coastal Mapping
- Railroad Monitoring
- Counter-Narcotics
- Pipeline Monitoring
- Sea Ice Detection & Monitoring
- Search & Rescue
- Illegal Migrant Operations
- And More!



P. 801.798.8440  
F. 801.798.2814

E. SALES@IMSAR.COM  
W. WWW.IMSAR.COM

A. 940 S 2000 W #140  
SPRINGVILLE, UT 84663