

MS400P

Multibeam Echo Sounder



Easy operation for one person



High Performance

Beam Angle $1^{\circ} \times 2^{\circ}$ |
Number of Beams 512 |
Resolution 0.75cm
IHO Standard Special
Order



Low Power Consumption

Power Consumption is least 60W
working for 8 hours
with an ordinary
storage battery



Small Size

288mm x 240mm x
120mm | Similar to A4
paper | Easy to carry in
a backpack



Light Weight

Total system is weight
around 10.3kg (Trans-
ducer 8.3kg / Deck
Unit 2kg) | Easy to
hand carry and quick
to install.

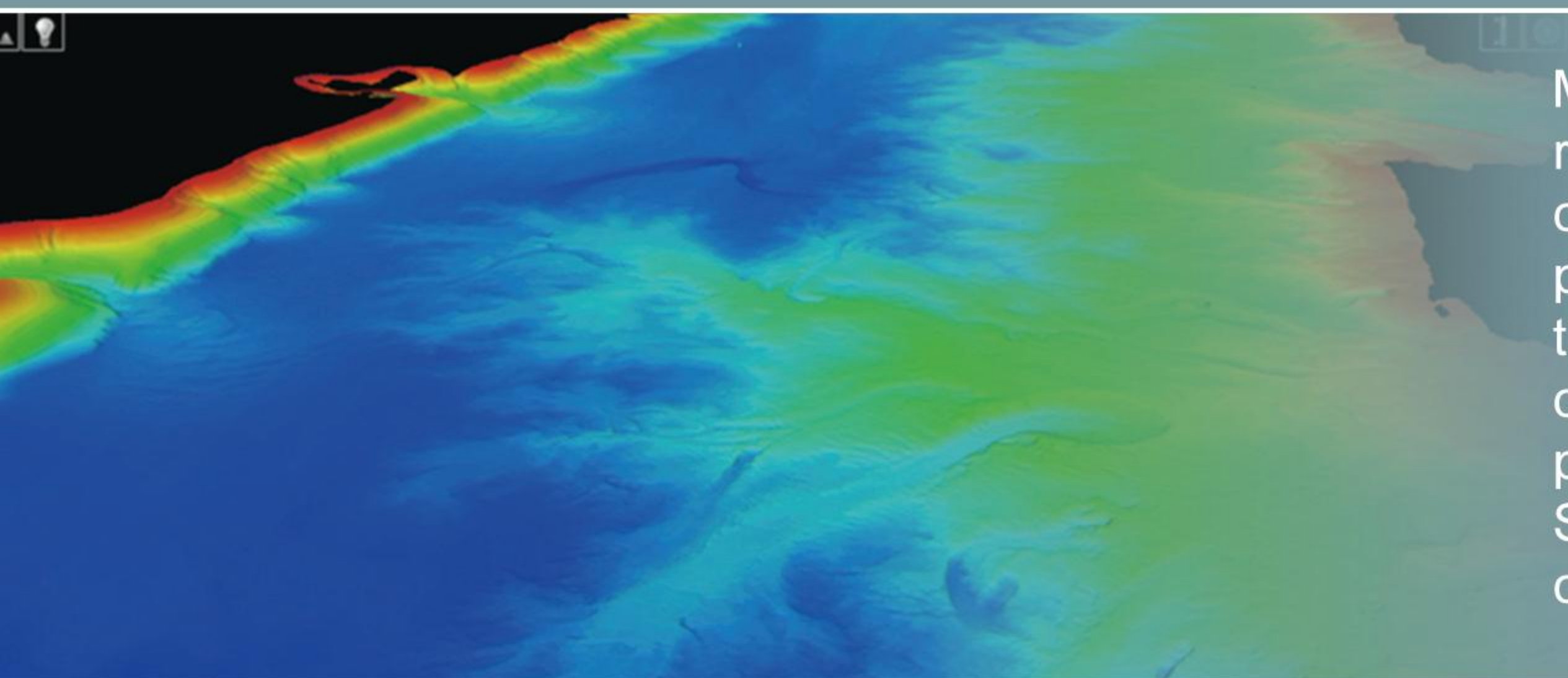


Beijing Hydro-Tech Marine Technology Co.,Ltd.

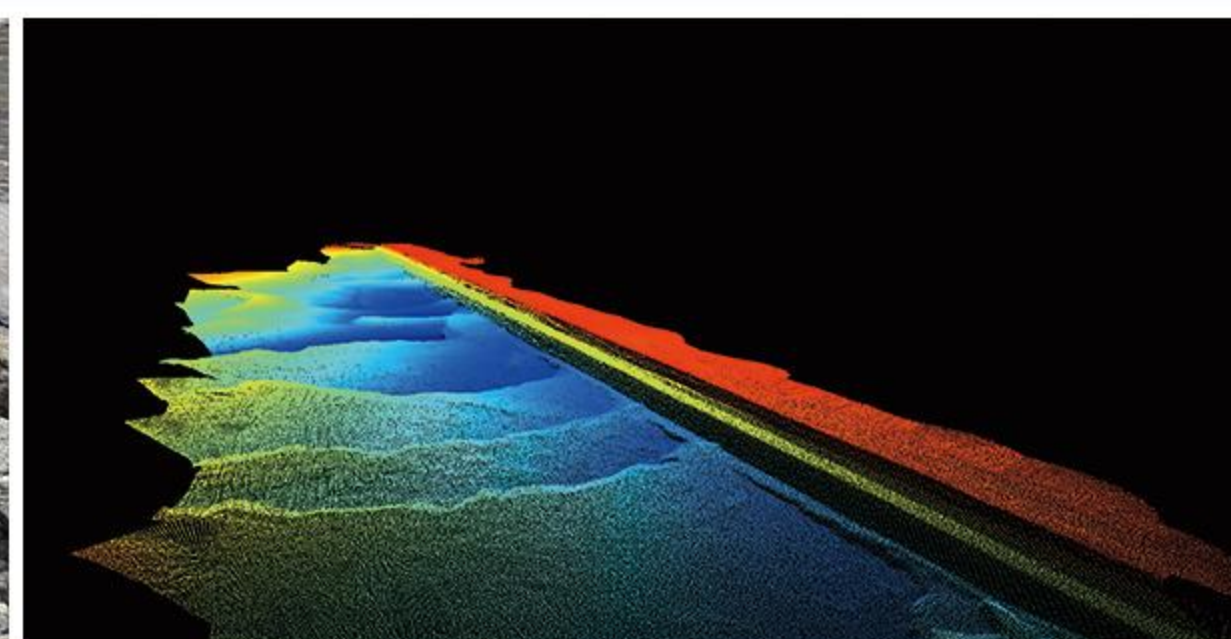
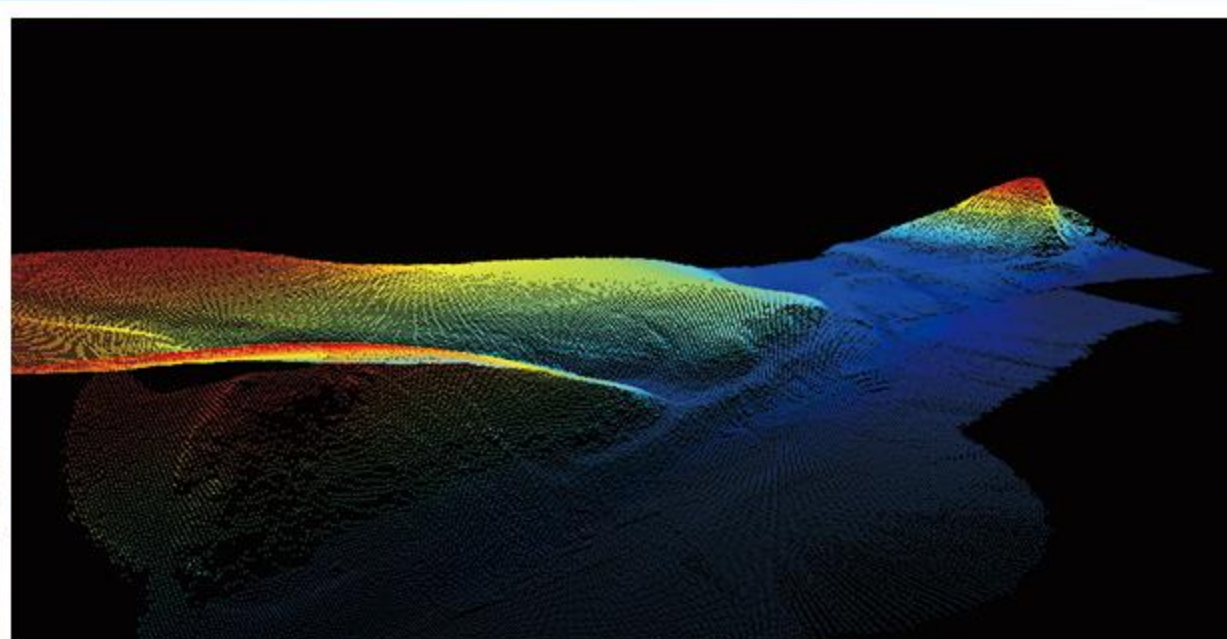


◀ Learn More

MS400P Multibeam Echo Sounder



MS400P is new generation of multibeam echo sounder that fully reflects the developing trend of the industry. It has advanced concepts and excellent performance, such as small and compact, light weight (8.3kg only), low power consumption (Less than 60W). Its installation is quick and convenient. MS400P has changed traditional hydrographic surveying concept with the powerful function and great accuracy, which fully meets the IHO Special Order. MS400p is designed as easy operation. Even only one person can work freely!



Recommendation

- Suitable for users with small size, light weight, low power consumption and other requirements.
- It is especially suitable for emergency surveys, river and lake bathymetric surveys in plateau and mountainous areas, and projects that can only use small or USVs as carriers.
- Engineering projects requiring frequently large scale transferring or transportation in domestic or cross-border.
- Surveying with underwater ROV, surface boats and speed boats etc.

Applications



Emergency
Rescue



Plateau
Lake



Cross Section
Survey



Cross Border
Survey

Carriers



ROV



Speed Boats



Inflatable
Boats



Oaring
Boats



Technical Specifications

Operating Frequency	400kHz
Number of Beams	512
Across Track Beam Width	1°
Along Track Beam Width	2°
Swath Sector	143°
Depth Range	0.2~200m+*
Resolution	0.75cm
Operating Mode	Equiangular / Equidistant
Max Ping Rate	60Hz
Signal Form	CW/Chirp
Pulse Width	30us~8ms
Max Working Depth	50m

* Depending on environmental conditions.



Special Features

Near Field Focus	Yes
Bottom Tracking	Yes
Water Column	Yes
Real-time Roll Stabilization	Yes



Physical Specifications

Transducer Size	288 x 240 x 120 mm
Weight	8.3KG
Deck Unit Size	200 x 145 x 75.5 mm
Deck Unit Weight	2KG
Operating Temperature	-2°C~40°C
Storage Temperature	-20°C~55°C
Power Supply	DC10-32V/AC110~240V
Power Consumption	Standard mode: 80W Low power mode: 60W



Software

Display & Control Software	HydroQuest
Navigation & Data Collection Software	HydroNavi
Compatible with	Hypack, Qinsy, BeamworX



Auxiliary Equipment

SVS:	Internal (SVS1500)
SVP:	Optional (SVP1500)
IMU:	Optional
Positioning:	Optional



Optional INS Specifications

Optional INS Model	POS-25	POS-15
Heading Accuracy (GNSS Effective)	0.06° (4 m Base Line) 0.08° (2 m Base Line)	0.015° (4 m Base Line) 0.03° (2 m Base Line)
Attitude Accuracy (GNSS Effective)	0.03° (Real-time RTK) 0.025° (Post Processed)	0.02° (Real-time RTK) 0.015° (Post Processed)
Heave Accuracy	5cm or 5% Range 2cm or 2% Range (TrueHeave)	5cm or 5% Range 2cm or 2% Range (TrueHeave)
Horizontal Positioning Accuracy	±8mm+1ppm (RTK, PPK) 0.5~2m (DGPS) / 10cm (PPP)	±8mm+1ppm (RTK, PPK) 0.5~2m (DGPS) / 10cm (PPP)

** All features and specifications are subject to change without notice.

☎ 86-10-5727 5310

🏠 Building 5, Yard 33, Jingsheng South 2nd Street, Tongzhou District, Beijing, China

🌐 www.hydro-techmarine.com

