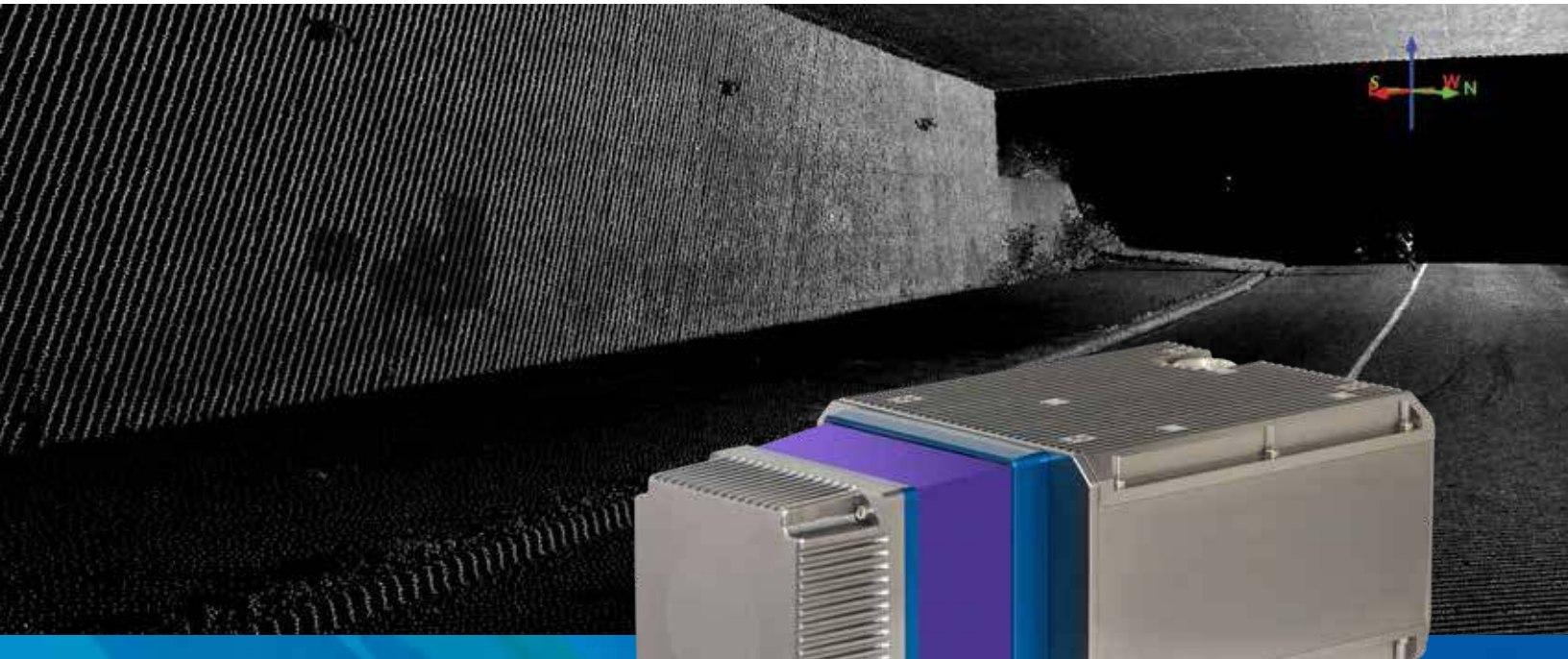




TELEDYNE OPTECH
Everywhereyoulook™

Part of the Teledyne Imaging Group



NEW

CL-360

360 Degree Laser Scanner

The Optech CL-360 is a survey grade 360 degree laser scanner enabling OEM hardware manufacturers and integrators to develop the next generation of best-in-class UAV, mobile, and terrestrial scanning solutions for surveying in mapping, engineering, transportation and utility applications.

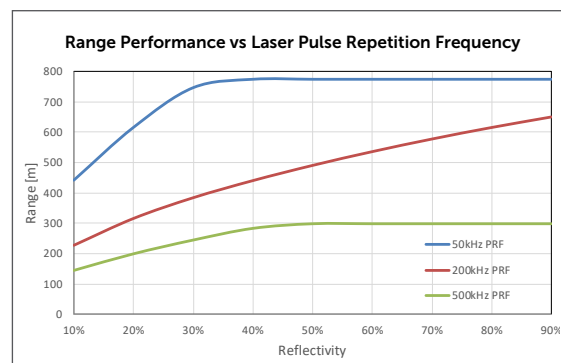
The CL-360 supports a wide range of operating parameters including pulse repetition rate, range, and lines per second to allow it to be optimized for almost any application and data requirements.

CL-360 Laser Scanner

Technical Specifications

NEW

ITEM	SPECIFICATION
Laser	
Range measurement principle	Time of Flight
Range Performance ¹	775 m (50 kHz) to 300 m (500 kHz)
Pulse Repetition Frequency	500, 200, 50 kHz (Programmable)
Beam Divergence (1/e ²)	0.3 mrad
Wavelength	1550 nm
Laser safety classification	Class 1
Range resolution	2 mm
Intensity recording	12 bits
Maximum number of returns	4 (First, Second, Second Last, Last)
Minimum range	1.5 m
Range accuracy 1 sigma ²	10 mm
Precision single shot ²	5 mm
Scanning Characteristics	
Field of View	360°
Lines per second [Scan Frequency]	50 – 250 lines/sec
Environmental	
Operating Temperature (min / max)	-10°/+40° C
Storage Temperature (min / max)	-20°/+50° C
Vibration	DO-160H Section 8, Category S, Curve M
Shock	DO-160H Section 7, Category A, Standard Shock
Dimensions	310 mm L x 160 mm W x 116 mm H
Weight	3.5 kg
Protection Class	IP64 (Dust and splash proof)
Power	
Power Supply Input Voltage	11 – 36V
Power Consumption	60W
Interfaces	
Connector 1	Power, RS232, PPS
Connector 2	1000 Mbit/sec Ethernet
Data Storage	240 GB SSD
Post-Processing Software	Windows
Realtime API Library	Windows, Linux



1. 99% detection probability, 50 lines/second, 23km visibility, full footprint interception.
2. Max Range tested on flat targets, 50 lines/second scan speed, larger than the laser beam diameter, perpendicular angle of incidence and STD Clear visibility (23km).
3. Under Optech Test Conditions, contact for details.

Complies with 21 CFG 1040.10 and 1040.11 except for deviations pursuant to Laser Notice No. 50, dated June 24, 2007.



Class 1 Laser Product

ORDERING INFORMATION

Contact your local Teledyne Optech representative or an authorized Teledyne Optech dealer.



©Teledyne Optech Incorporated. E&OE. Information subject to change without notice. Printed in Canada. 191023



Canadian Space Agency
Agence spatiale canadienne

This program is undertaken with the financial support of the Canadian Space Agency.



TELEDYNE OPTECH
Everywhere you look™

Part of the Teledyne Imaging Group

www.teledyneoptech.com