

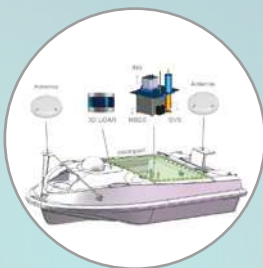
OCEAN α

SL40

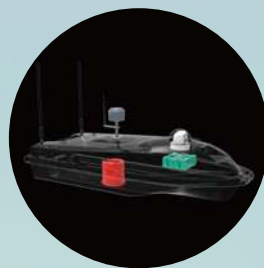


HYDROGRAPHIC SURVEY USV

*Compact Mult-function USV
Platform for Shallow Water
Hydrographic Survey*



Strong expansibility, adaptable to a variety of surveying and mapping sensors



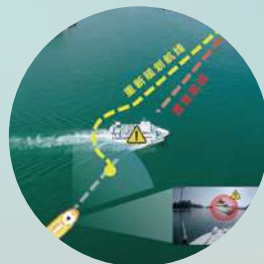
Moon pool enables a quick switch between different payloads



Powerful propulsion with maximum speed of 10 knots



Mobile online survey function can check real time data and video



Support mission planning, autonomous navigation and collision avoidance



Water-jet thruster, great performance against debris and water plants

SPECIFICATIONS

Physical

Dimension	1.6m(L)*0.6m(W)*0.4m(H)
Weight	34kg
Draught	0.2m
Hull Material	Carbon fiber composite
Payload	25kg

Performance

Max Speed	10 knots, 5m/s
Survey Speed	3 knots, 1.5m/s
Endurance	6hrs @ 1.5m/s

Control & Communication

Control Mode	Autonomous / Remote control
Range	Remote control: 1 km Data telemetry: 2km
Software	OceanAlpha USV Control software

Propulsion

Propulsion	Electric water jet
Battery capacity	33v/40AH lithium battery*2
Steering	Differential steering

Navigation aids & Safety

Camera	PTZ camera
Radar	Millimeter wave radar
Collision Avoidance	YES

Instrumentation

Moonpool	177mm/210mm in diameter
Typical payload	Single beam echo sounder Compact multibeam echo sounder Side Scan Sonar, LIDAR, ADCP

OceanAlpha Group Ltd.

RM 702,7/F SPA Centre, NO.53-55 Lockhart Road, Wan Chai, Hong Kong, China
W: www.oceanalpha.com T: 0086 756 2592836 E: sales@oceanalpha.com

