

OCEAN $\alpha$

# M40P

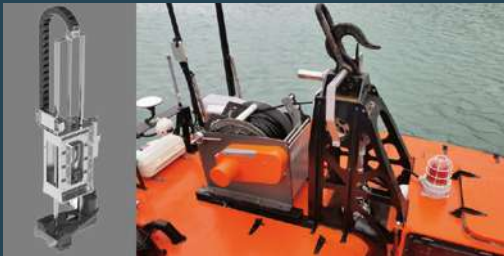
## **MULTI-FUNCTION SURVEY USV**

*Hydrographic Survey  
Site & Route Survey  
Construction Inspection  
Seabed Exploration*



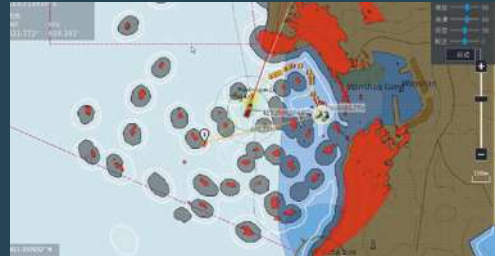
### FEATURES

#### EASY TO CONFIGURE



Automatic lifter avoids accidental loosening or bumping. Auto winch to deploy SVP/CTD for profile surveying.

#### ADVANCED AUTONOMOUS CONTROL



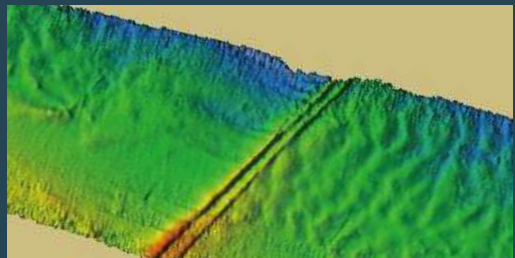
Highly sensitive environmental perception for advanced collision avoidance. Support Auto Return if lost connection or in low power.

#### REFINED POWER SYSTEM



Hybrid propulsion supports operations of up to 24 hours; Unmanned work mode reduces carbon emission.

#### HIGH QUALITY DATA OUTPUT



Unique structure design significantly reduces swaying and spray foam, providing a stable and quiet working condition to improve data accuracy

# SPECIFICATIONS

## Physical

Dimension	4.5m(L)*2.33m(W)*1.9m(H)
Displacement	1.4t
Draught	0.4m
Hull Material	Aluminum alloy
Payload	80kg

## Performance

Max Speed	7 knots
Survey Speed	4~5 knots
Endurance	30h/150nm
Survival Sea State	Sea State IV
Operation Sea State	Sea State II

## Control & Communication

Control Mode	Autonomous / Remote control
Range	Remote control: 1 km Autonomous control ((private network): 10km
Software	OceanAlpha USV Control software

## Propulsion

Propulsion	Electric propulsion with differential steering
Generator	Diesel generator
Fuel capacity	50L×2
Fuel type	0# diesel
Battery charge time	6h

## Navigation aids & Safety

Camera	720P HD camera * 4
Radar	Navigation radar
Collision Avoidance	YES
AIS	YES

## Instrumentation

Sensor mounting	Auto-lifter, auto winch (optional)
Moonpool	0.6m×0.5m
Typical payload	Echo sounder (SBES, MBES) Side Scan Sonar, Sub-Bottom Profiler Magnetometer, Water parameter sonde ADCP, Weather Station

# OCEAN $\alpha$

OceanAlpha Group Ltd.

[www.oceanalpha.com](http://www.oceanalpha.com) [+86 756 2592836](tel:+867562592836) [sales@oceanalpha.com](mailto:sales@oceanalpha.com)

[RM 702,7/F SPA Centre, NO.53-55 Lockhart Road, Wan Chai, HK, China](#)



[oceanalpha.com/contact/](http://oceanalpha.com/contact/)