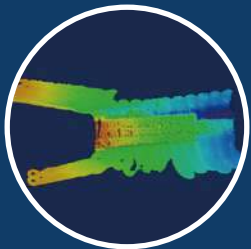


Geophysical & Hydrographic Surveys  
Environmental Monitoring  
Site & Route Survey / Inspection  
Construction & Installation Survey  
Pipeline & Cable Survey  
Seabed Exploration

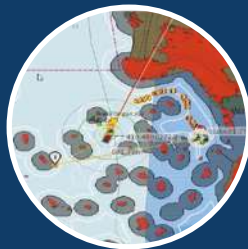
# MARITIME AUTONOMOUS SURFACE VESSEL



-   
**Oil & Gas**
-   
**Wind Farm**
-   
**Near Shore**
-   
**Off Shore**



Excellent ship design as low acoustic interference from propeller and water gushes, high-quality survey data acquisition.



Higher accuracy autonomous navigation algorithm for accurate site survey and higher survey efficiency.



Advanced collision avoidance system, situational awareness maximized, enables safer operations.



Anti-rolling and wave-piercing hull design, super stable even in turbulent waves and able to operate in high-sea conditions with greater weather tolerance.



Smart auto-winch structure supports equipment tow service and foldable lifter protect the wet-ends of the sensors.

## SPECIFICATIONS

Hull Material	Aluminum Alloy
Hull Design	Unique Catamaran Hull
Dimension	7.5m(L)*2.8m(W)*3m(H)
Displacement	2.5t
Payload	200kg
Speed	Max Speed 10kn Survey Speed 5kn
Endurance	24h/150nm
Operation Sea State	Sea State II
Survival Sea State	Sea State IV
Propulsion	Outboard propeller*2, Outboard Diesel Engine*2 0# Diesel, Tank fuel 150L*2
Power	Lithium Battery + Range-extended by Diesel Generator
Diesel generator	German Marine Generator with variable speed engine
Deck Machinery	Auto Winch Auto Lifting mechanism: wet-end Lifter
Electronics Compartment	Environmental monitoring sensor, air cooling system
Onboard Industrial PC	√
Battery State Monitoring	√
Fuel State Monitoring	√

## COMMAND & CONTROL

Communication	Private Network 10km Option: Radio, Satcoms Remote Control 500km
Control Station	Semi-rugged / Rugged laptop Industrial Smart Remote Controller
Auto Navigation & Auto Route Plan	OceanAlpha Navigation & Monitoring Software
Collision Avoidance System	Side light / AIS / Navigation Radar / 4*HD camera
Auto Homing	√
Smart Launch & Recovery	√

\* Planned maintenance of engine \*400 hours

## PAYLOAD INTEGRATION ABILITY

Typical Payload	MBES: Teledyne T20 / T50 / Kongsberg EM2040P MKII Sub-bottom Profiler : Innomar / Edgetech / GeoPulse Side Scan Sonar: Edgetech 4205/6205, PING 3DSS-DX-450 Magnetometer : SeaspY2 Water Quality Sonde ADCP , LIDAR Tow Support: SVP / CTD / Magnetometer / Side-scan Sonar
-----------------	---

**OCEAN $\alpha$**

RM 702,7/F SPA Centre, NO.53-55 Lockhart Road,  
Wan Chai, Hong Kong, China

☎ 0086 756 2592836 ✉ sales@oceanalpha.com

🌐 www.OceanAlpha.com

