

Autonomous Water sampling and monitoring

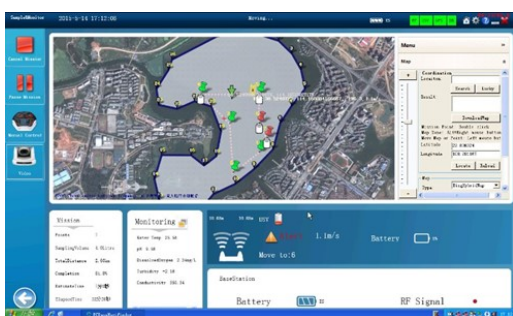
DISCOVER MORE OF OUR WATER ENVIRONMENT



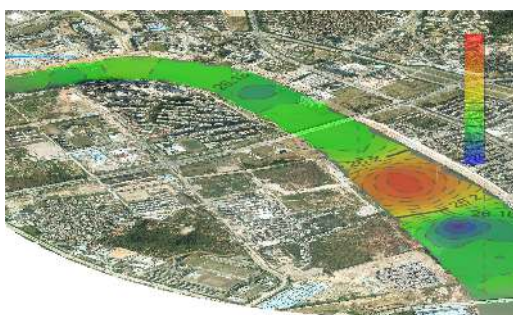
Autonomous operation



Water sampling and monitoring



Intelligent waypoint navigation



Pollution source tracking



Key Functions

Oceanalpha autonomous water sampling and monitoring boat is specially designed for environmental monitoring and automatic water sampling, can be integrated with different multi-parameter water quality probe to acquire online water quality data in a safe and efficient way.

- Standardized water sampling(1.8L*4)
- Online water quality monitoring
- Emergency fast response and pollution tracking

Product highlights

- Autonomous navigation and intelligent obstacle avoidance
- Water quality contour map and sampling report could be output
- 5km data and 2km video transmission with real time monitoring
- Maximum 3.5 hours cruising ability
- Compatible with multi-parameters water quality probe

SPECIFICATION

Autonomous water sampling and monitoring

Item		ESM30		MM70	
Physical	Dimensions	1150mm x 750mm x 430mm		1470mm x 900mm x 600mm	
	Weight	31Kg		52Kg	
	Material	Fiber Reinforced Plastic with kavlur fiber			
	Color	Yellow-Black		Blue-White	
	Power supply	14.8v High Power Lithium Polymer Battery			
Electrical	Communication System	Control	Video	Control	Video
		RF point-to-point	WIFI	RF point-to-point	WIFI
	Communication Range	5km	2km	5km	2km
Driver	Model	Integrated outboard motor TJ30		Integrated outboard motor TJ70	
	Max. speed	1.5 m/s		1.6 m/s	
Safety	Anti-sink	Yes			
	Obstacle Avoidance	Detect obstacle within 10m			
	Cruising ability	3. 5 hours		6 hours	
Operating	Cruising mode	Auto / Manual			
	Control mode	Remote controller			
		Base station			
Water sampling		Sampling capacity: 7.2L		Sampling capacity: 7.2L	
		Sampling boxes: 1.8L x 4		Sampling boxes: 1.8L x 4	
		Water sampling depth: 0.3-0.5m			
Water Monitoring		Sampling report output			
		Integrate with multi parameters probe			
		Water quality parameters mapping			
		Data logger input : RS232			



Sampling box



Handheld terminal



Base station

About Oceanalpha

Oceanalpha is a leading supplier of USV (unmanned surface vehicle) which applied in water environment monitoring, hydrographic survey, surveillance and security etc. With advanced Intelligent technology, Oceanalpha have been dedicated to provide autonomous platform to protect our water environment.

Oceanalpha Co., Ltd.

D3-407, No.1 Software Road, Nanfang software park, Zhuhai, Guangdong, China

www.oceanalpha.com sales@oceanalpha.com Tel : +86(756)3626960 Fax: +86(756)3626960