

## C-SWEEP

### MULTI-ROLE MCM USV

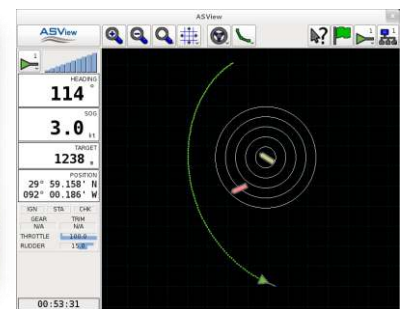
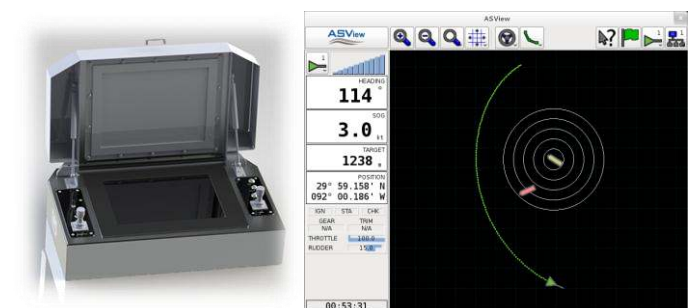
**C-SWEEP** is a rugged, high performance Unmanned Surface Vehicle (USV), designed to offer a high degree of directional stability and payload capacity. It provides substantial towing capacity for long-endurance mine countermeasures operations and a robust electrical generating capacity to support modern mine sweeping equipment requirements.

#### Key Features

- Robust composite or aluminium hull
- Twin diesel engines
- ASV's proven control system
- Direct control
- Semi-autonomous & autonomous modes
- Real time data and video feedback
- Sensor data channels & redundant emergency stop system
- Protected wheelhouse for manned operations (dive support boat etc)

#### Applications

- Mine Sweeping
- Mine Hunting
- Deployment of inspection and disposal ROVs
- Deployment, tracking and recovery of AUVs
- Hydrographic survey
- Remote sensing and surveillance



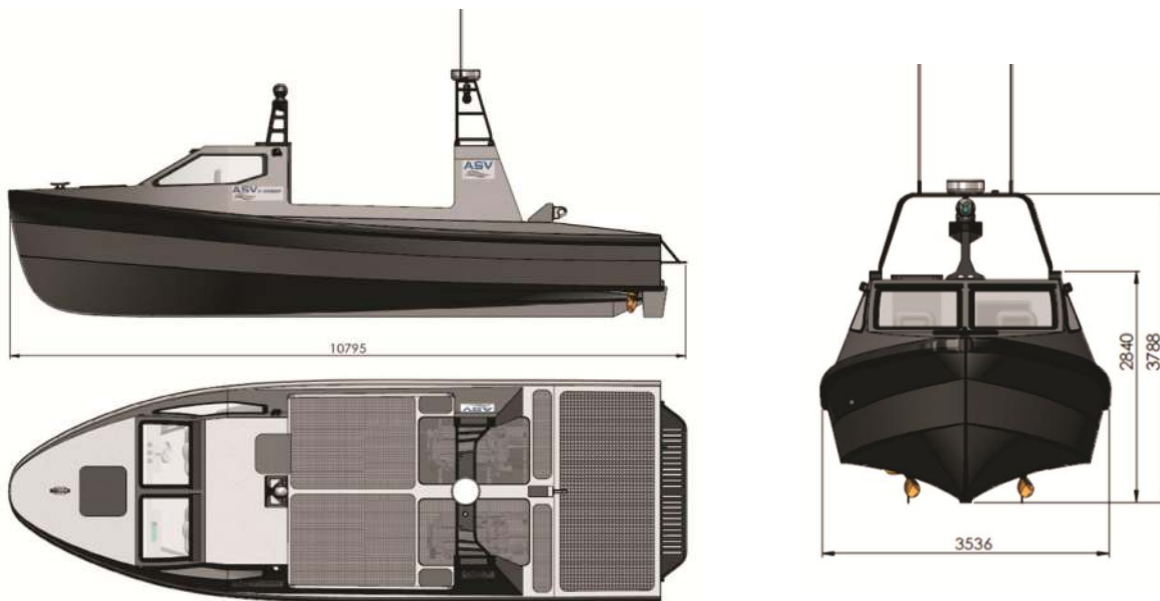
#### ASV

ASV Ltd designs and constructs rugged and reliable unmanned systems using innovative marine technology for commercial, government and military applications. Established in 1998, ASV is based near Portsmouth in the United Kingdom and is part of the Global Fusion Group, incorporating C&C Technologies, an international marine services organisation based in Lafayette, USA, which provides offshore positioning, survey, geo-science, and autonomous marine vehicle services worldwide.

## C-SWEEP – Technical Specifications

Physical	
<b>Length</b>	10.8 m (35'5")
<b>Beam</b>	3.5 m (11'6") - including fender
<b>Height</b>	2.9m (9'6") – masts folded
<b>Draft</b>	~1.0 m (3'4")
<b>Weight</b>	~9000 kg (unmanned)
<b>Propulsion</b>	Two Marine Diesel engines driving two large diameter slow turning propellers.

Power and Controls	
<b>Speed</b>	25 knots (no tow)
<b>Operational Payload Carrying Capacity</b>	Up to 2.5 tonnes
<b>Endurance/Range</b>	200 nm+
<b>Fuel Capacity</b>	2300 ltrs (upgradeable)
<b>Control</b>	ASV Con-LR, Long Range, Multi-boat. Direct, Semi-Autonomous or Autonomous modes.
<b>Communications</b>	UHF, L/S Band, Sat-Comms
<b>Options</b>	Sidescan, Multibeam and Diver Detect Sonar, USBL Clip-on Mine Sweep or Winch Deployed Systems Electrical Generator, Daughter AUV/ROV Launcher



ASV is part of the Global Fusion Group of companies

### Autonomous Surface Vehicles (ASV) Limited

Unit 6 Trafalgar Wharf  
Portchester, Hampshire PO6 4PX  
England  
Tel: (+44) (0) 239 238 2573  
Email: sales@asvglobal.com

USA Office  
703E Kaliste Saloom Road  
Lafayette LA 70508 USA  
Tel: (+1) 337 735 3736  
Email: sales@asvglobal.com

© Autonomous Surface Vehicles Ltd 2012. All rights reserved. Issue 03/2012  
This publication is for outline information only and may not be used, applied or reproduced for any purpose. The Company reserves the right to alter without notice the specification design, or conditions of supply of any product or service.

ASV Ltd 3689515 Registered Office: Piper House, Bognor Road, Chichester PO19 8FX

