

ASV unmanned
marine systems

C-Worker

AUTONOMOUS SURFACE VEHICLE



C-Worker 6 Specifications

LOA: 5.8m (19')

BOA: 2.2m (7'3")

Displacement: lightship: 3.5 tonnes, loaded: 5 tonnes

Propulsion: 2 diesel generator sets driving two electrical propulsion pods via a battery bank

Payload power: 1 kW

Features:

Self-righting (loaded or light)

Aluminium hull (8mm thick bottom); swappable instrument payload

Fully redundant power, propulsion and communication systems

AIS, radar, daylight and infrared imagery system

DGNSS, satellite and fluxgate compasses

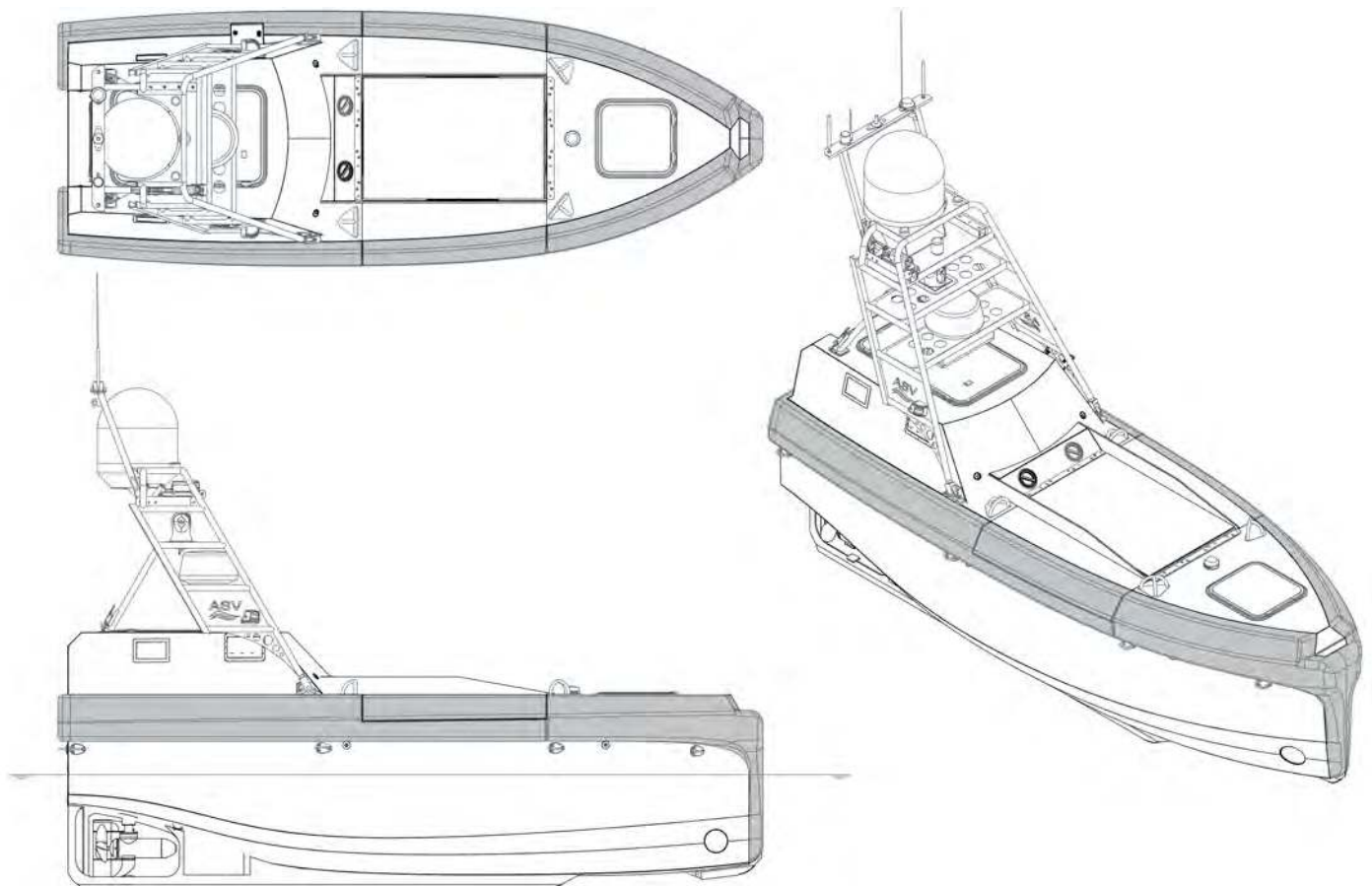
UHF command and control link, proven to 40 km. L-band high bandwidth link, proven to 10 km (antenna height dependent), Iridium and VSAT satellite links

Vessel can freestand on ships deck; high-strength tie down points

Supplied with combination road trailer/deck cradle with integrated payload handling davit, or optional 20-foot container

Up to 30 days endurance at 4 Knots, Max speed 6.5 Knots

Transportable by air or sea freight

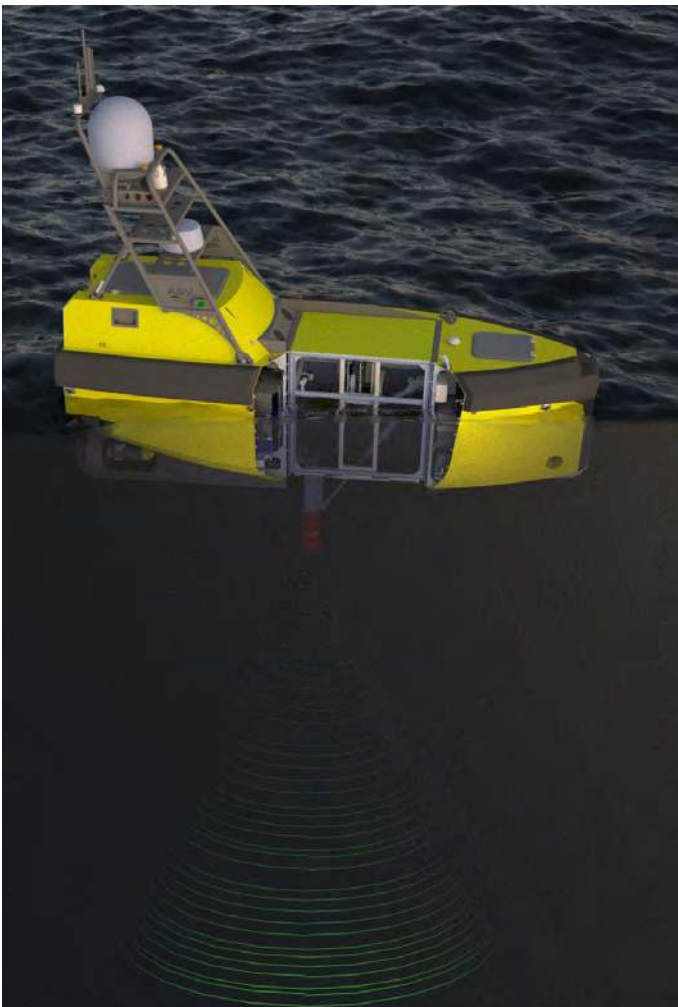


Payloads/Sensors

- DGNSS, Iridium & UHF control radio link; VSAT optional
- Attitude sensor/INS inertial system
- Multibeam sonars (bathymetry, leak detection, structure integrity)
- ADCPs (multiple frequencies surface to 700 m 75/150/300/600 KHz)
- Magnetometers (mobile or base station)
- Integrated self-calibrating INS+USBL systems (Sonardyne, others)
- Sound velocity sensors
- Passive Acoustic Monitoring (PAM) and Sound Source Verification (SSV)
- Custom payloads available

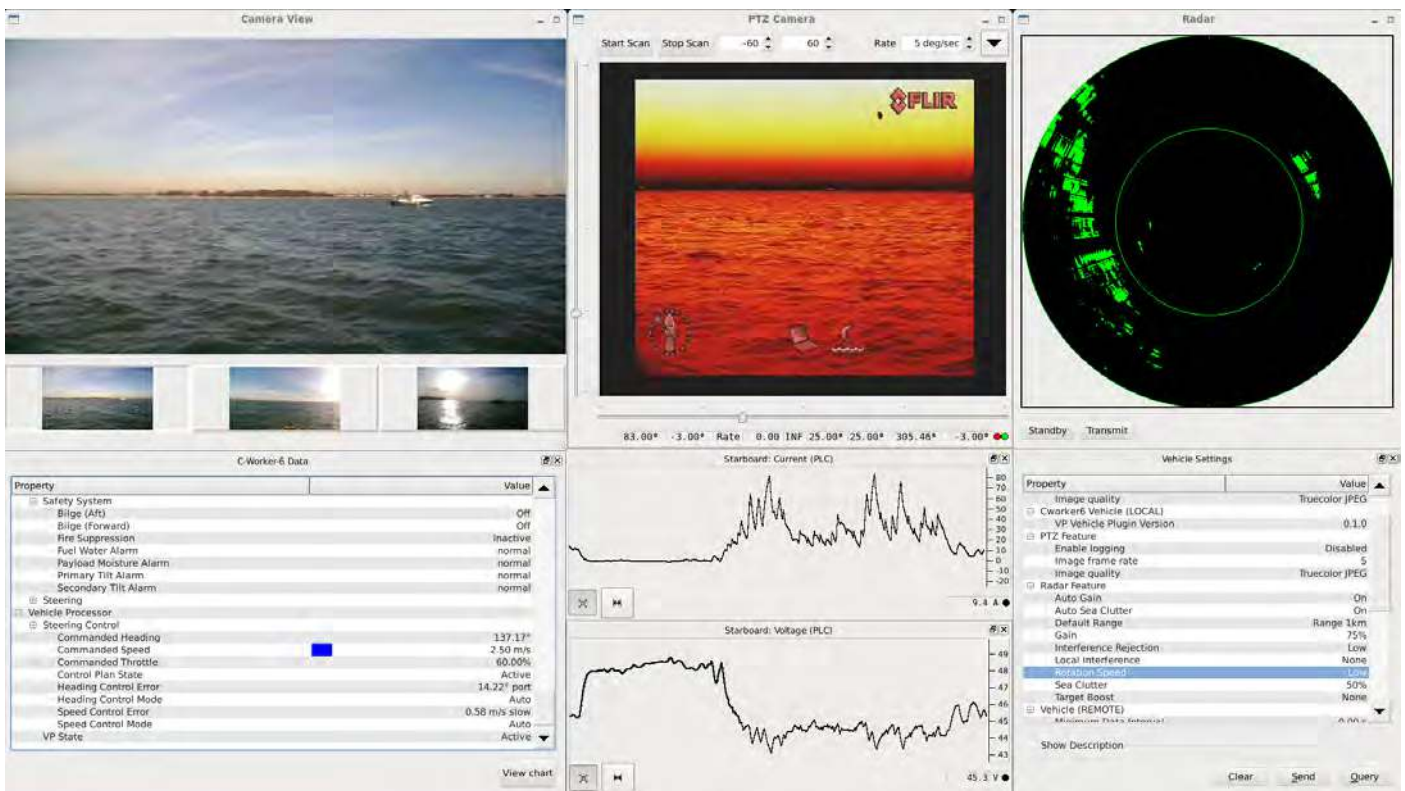
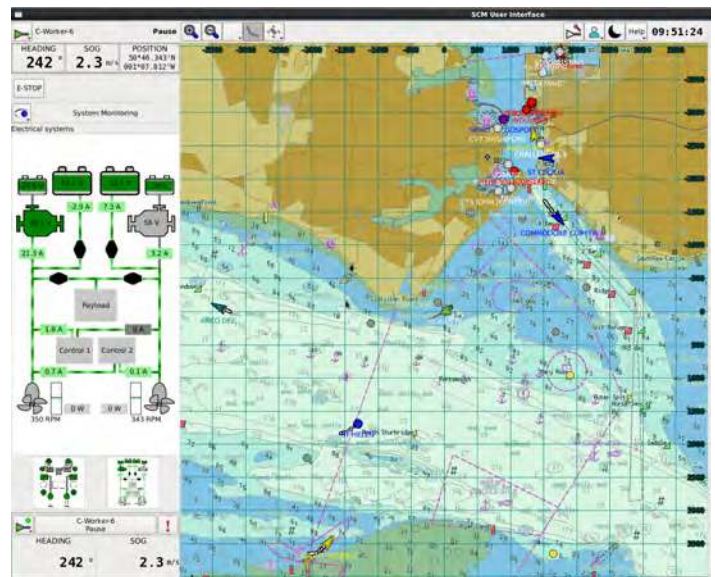
Applications

- Marine construction survey: USBL, DGNSS, ADCP, CTD
- Metocean data collection: ADCP, weather station, CTD
- Environmental: Passive Acoustic Monitoring (PAM), hydrocarbon detection
- Seismic support: CTD, USBL, PAM, ADCP
- Site survey: multibeam sonar, motion sensors, CTD, sidescan sonar, magnetometer, sub bottom profiler, observation class ROV
- Security: camera, video, infrared sensors



Command and Control

- Direct manual control (low latency)
- Heading hold and track
- Waypoint following
- Line following (minimum XTE)
- Orbit and station keeping modes
- Missions combining all the above
- Multiple communication links
- Integration to third party software
- Redundant safety systems
- AIS and radar monitoring
- Collision avoidance tools
- Single/multiple video cameras
- Payload integration (sonars etc)



ASV Ltd

Unit 6a Trafalgar Wharf, Hamilton Road
Portchester, Hampshire UK PO6 4PX
+44(0) 23 9238 2573

sales@asvglobal.com

www.asvglobal.com

ASV US

10615 Shadow Wood Drive, #100
Houston, TX 77043, USA
+1-713-468-1536

sales@asvglobal.com

www.asvglobal.com